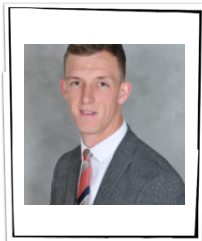


# Who Do I See?

## Senior Leadership Team



**Mrs Bailey**  
Headteacher / DSL



**Mr Jones**  
Deputy Headteacher / DDSL



**Mrs Brown**  
Assistant Headteacher

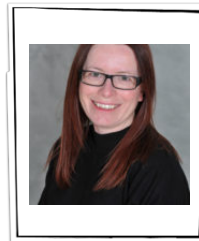


**Miss Parry**  
Senior Leader / DSL

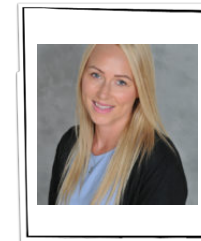
*I would like to inform the school about an **urgent** safeguarding matter.*

*I have spoken to my child's Class Teacher and their Team Leader but now wish to discuss the matter further.  
This will be dealt with by Miss Parry / Mrs Brown in the first instance.*

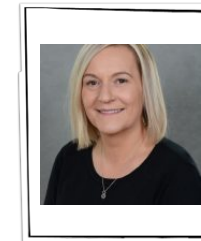
## School Office Team



**Mrs Baddeley**  
School Secretary



**Mrs Sutton**  
School Business Assistant



**Miss Johnson**  
School Business Officer  
PA to the Headteacher

*I have a question about or wish to discuss:*

- school events;
- reporting my child's absence;
- payment for educational visits, school dinners, etc.;
- updating my contact details.

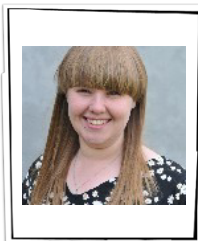
## Team Leaders



**Mrs Mifflin**  
Early Years  
Team Leader



**Miss Rowe**  
Lower School (Y1-3)  
Team Leader



**Miss Thompson**  
Upper School (Y4-6)  
Team Leader

*I have spoken to my child's Class Teacher but now wish to discuss further my child's:*

- engagement / behaviour;
- attainment
- progress;
- friendships.

## Welfare and Inclusion Team



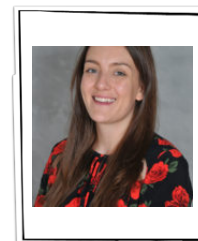
**Miss Parry**  
Senior Leader /  
DSL



**Miss Foden**  
Family Welfare Assistant  
/ DDSL



**Miss Townley**  
Nurture Lead

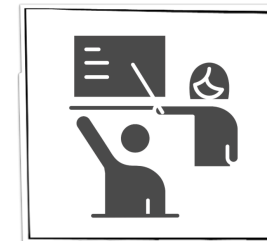


**Miss Wilson**  
Special Educational  
Needs Coordinator

*I have a question about or wish to discuss my child's:*

- welfare and wellbeing;
- attendance / punctuality
- safeguarding or child protection (**please stress the importance and direct to a DSL or DDSL**);
- special educational needs and/or disabilities.

## Class Teachers



See **Parent Information Booklet** for 'Who's Who'.

*I have a question about or wish to discuss my child's:*

- education (engagement / attainment / progress);
- friendships.

**In most cases, the class teacher will be the best person to answer your questions.**